



20
22

ANNUAL REPORT

CONTENTS:

ESSENCE	P. 1
LETTER TO STAKEHOLDERS	P. 2
SPECIAL PROJECTS REPORT	P. 4
C-PACE REPORT	P. 6
FINANCE REPORT	P. 8
COMMITTED PROJECTS	P. 10
FINANCIALS	P. 11
BOARD AND STAFF	P. 12

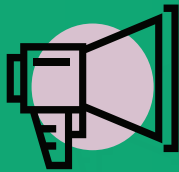
ESSENCE:



CORE VALUE
Revitalize living systems



CORE PROCESS
Realize and regenerate energy future



CORE PURPOSE
Enable action



VOCATION
Enabling energy users to effect a response by an energy user to take action to move towards a regenerative energy future

LETTER TO STAKEHOLDERS

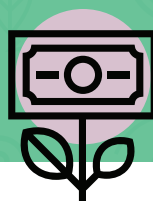
DEAR STAKEHOLDERS,

2021 was a challenging year for the Sustainable Energy Fund. Although we maintained a sizable loan portfolio through most of the year, we lost a principal non-traditional borrower due to a merger. There are significantly more financing providers for energy efficiency and renewable energy projects than ten years ago. I expect SEF's lending business to rebound from the 2021 performance but not at levels before the pandemic. This loss will significantly impact the Fund's interest income. Although SEF provided some educational activities, the Energypath conference and training activities were below historical levels. Also, due to business activity associated with the pandemic, SEF has been unable to lease tenant space in the net-zero building.

On the positive side, web-based training has been successful and has generated a new revenue source. Loan interest income was significantly higher than usual due to two non-traditional loans. The organization deployed Alternative Compliance Payment funds to renewable electricity-producing projects. Also, SEF efforts with C-PACE are seeing results as more counties implement a program where SEF is the program administrator.

The organization continues its journey to becoming regenerative. We have continued to reinvent ourselves, transitioning from a mechanistic organization to one that views systems, organizations, and society as living wholes. As SEF strives to be a leader in the community and business, it operates in a way that contributes more to the community, the earth, its employee, and vendors than it takes. In the end, the organization seeks to set the conditions for life to renew itself continuously.

JOHN COSTLOW,
PRESIDENT / CEO



LDERS:

A smiling man wearing a white hard hat and a high-visibility yellow safety vest over a light blue shirt is shaking hands with a smiling woman with blonde hair in a white button-down shirt. They are standing in front of a large array of solar panels. The background shows a clear blue sky and distant mountains. A green semi-transparent overlay with a white dot pattern covers the left side of the image.

SUSTAINABLE FACT:

Lorem ipsum dolor sit amet, consectetur adipiscing elit. Quisque nunc diam, scelerisque at dui eu, euismod mattis augue. Vestibulum est.



SUSTAINABLE FACT:

Lorem ipsum dolor sit amet, consectetur adipiscing elit. Quisque nunc diam, scelerisque at dui eu, euismod mattis augue. Vestibulum est.

EDUCATION REPORT:

The annual Energy Service Provider Experience was canceled for 2021 due to ongoing COVID restrictions. At the beginning of the year, SEF focused its educational efforts on virtual events and webinars. As the year progressed, we saw some events return, including Energypath 2021. The result was a year of continued outreach and engagement virtually and in person to our ESPs and other stakeholders.

Energypath 2021 Building Wellness at Minimal Energy Penalty took place on Tuesday, June 29th, at DeSales University. The event featured a Keynote lunch by Douglas Fisk on Equals: the Progression of Wellness in Buildings. The event also included sessions on topics such as Energy Efficiency and Implications of Ventilation and Wellness Standards, Energy Minimization Utilizing Existing Technologies, and HVAC Strategies for Safeguarding Wellness.

SEF was very excited to finally hold the Net Zero Energy building ribbon-cutting in September. The Net Zero Energy building showcases our dedication to walking the walk. Approximately 40 people attended, including State Representative Gary Day, Lehigh County Executive Phil Armstrong, and representatives from Senator Patrick Brown's and Congresswoman Susan Wild's offices. The ceremony included a dedication of the Craig Onori Energy Education Classroom.

Following the ceremonies, we held our first seminar on the Net Zero Building, presented by SEF, Ashely McGraw Architects, TN Ward, and AKF Group. While 2021 continued to present challenges, we were able to offer a series of hybrid events, including webinars and building tours.

2021 EDUCATION OVERVIEW || EVENT ATTENDEES: 528 | EVENTS HELD: 20



C-PACE REPORT:

C-PACE continued to grow in 2021. Delaware, Erie, Westmoreland, Luzerne, Bucks, Warren, and Dauphin Counties all passed resolutions for C-PACE. This brought the count to a total of twenty counties.

In 2021, two additional projects closed: the Commodore in Northampton County and 10 Duff in Allegheny County. The Commodore secured \$3.4 million in private financing through Pennsylvania C-PACE. The project is an energy-efficient mixed-use building containing office, retail, and restaurant space. Eligible energy improvements funded through C-PACE include high-efficiency heating and cooling systems, LED lights, and upgrades to the building envelope and plumbing fixtures.

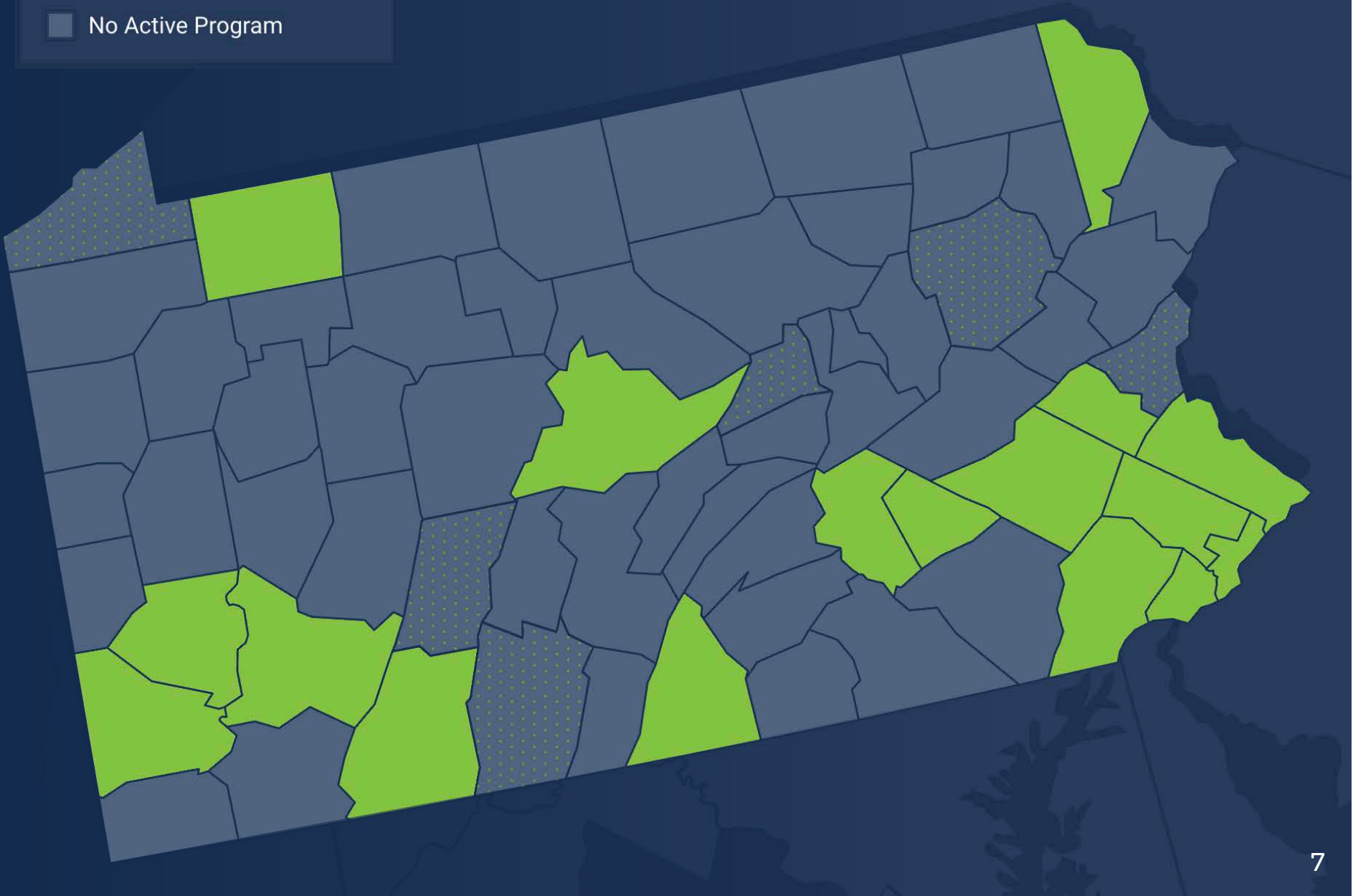
10 Duff in Allegheny County secured \$951,977 in financing through C-PACE, which will be used for an updated HVAC system, LED lighting throughout the building, building envelope, high-efficiency elevators, a building management system, and updated plumbing fixtures in this multi-use commercial property.

We look forward to the continued expansion of the C-PACE program.



COUNTIES WITH RESOLUTIONS PASSED

- Expansion Program
- Active Program
- No Active Program



A person's hands are shown reviewing financial reports on a desk. The left hand points to a table in a document, while the right hand, adorned with a ring, is raised in a gesture. In the background, a laptop displays various charts and graphs. The entire scene is overlaid with a green tint and a white dot pattern.

SUSTAINABLE FACT:

Lorem ipsum dolor sit amet, consectetur adipiscing elit. Quisque nunc diam, scelerisque at dui eu, euismod mattis augue. Vestibulum est.

FINANCE REPORT:

Sustainable Energy Fund provides financing designed to advance energy efficiency and renewable energy projects throughout Pennsylvania. SEF has been a leading funder of sustainable energy projects and has been involved in financing projects worth over \$160 million combined. Sustainable Energy Fund has made over \$60 million in program-related investments. The Sustainable Energy Fund has committed \$764,727 and dispersed \$1,021,933. Sustainable Energy Fund provides financing to commercial and nonprofit entities for energy-related projects that either:

- **reduce energy consumption;**
- **generate energy from a renewable resource; or**
- **replace fossil fuels with a clean energy source**

In 2021, we offered the ACP Renewable Energy Loan revolving loan fund. Sustainable Energy Fund provided loans at an interest rate of 1% thanks to Alternative Energy Compliance Payments from electric generation supplier defaults. The offer was for a limited time and for loans up to \$100,000—the projects are required to generate renewable energy and must be registered with the Pennsylvania Public Utility Commission Alternative Energy Credit Program. The program was fully subscribed to in 2021.

Our mission is to move society towards a sustainable energy future – starting locally. In 2018, we instituted a Nonprofit Energy Makeover Contest that audited over 40 Pennsylvania nonprofits to highlight local efforts. A result of this contest was the realization that nearly all of these organizations' facilities suffered weatherization issues in their buildings, negatively affecting the comfortability of staff and increasing electric bills.



FINANCE REPORT:

NET ASSETS	2021
Unrestricted Net Assets	\$20,221,701
TOTAL LIABILITIES & NET ASSETS	\$24,434,680

\$24MM

Total Liabilities and Net Assets

LIABILITIES	2021
Mortgage Loan Payable	\$3,822,409
Other Liabilities	\$380,570
TOTAL LIABILITIES	\$4,212,979

\$764,727

Financial Commitments

ASSETS	2021
Investments	\$12,933,261
Program Related Investments	\$3,293,629
Equipment and Building, Net	\$7,033,199
Other Assets	\$1,174,591
TOTAL ASSETS	\$24,434,680

\$1,021,933

Financial Disbursements





SUSTAINABLE FACT:

Lorem ipsum dolor sit amet, consectetur adipiscing elit. Quisque nunc diam, scelerisque at dui eu, euismod mattis augue. Vestibulum est.

BOARD MEMBERS:



JOCELYN CRAMER

Board Chair



BRANDI SNYDER

Vice Chair



LARRY EIGHMY

Secretary/Treasurer



EVAN PAPPAS

Board Member



LYNN ROTHMAN

Board Member



RUDY SHANKAR

Board Member



KURT ZWERKO

Board Member

STAFF MEMBERS:



JOHN COSTLOW

President/CEO



KELLY SANDERS

Director Of Programs



BRENT BECK

Energy Engineer



SCOTT DESTEFON

Pri Analyst



BRIAN HILLARD

Government Relations



SAMANTHA KERN

Marketing Coordinator



SALLY KRATZ

Accountant



RENEE RILEY

Relationship Manager



4250 Independence Drive, Suite 100, Schnecksville, PA 18078 610.264.4440 thesef@thesef.org www.thesef.org